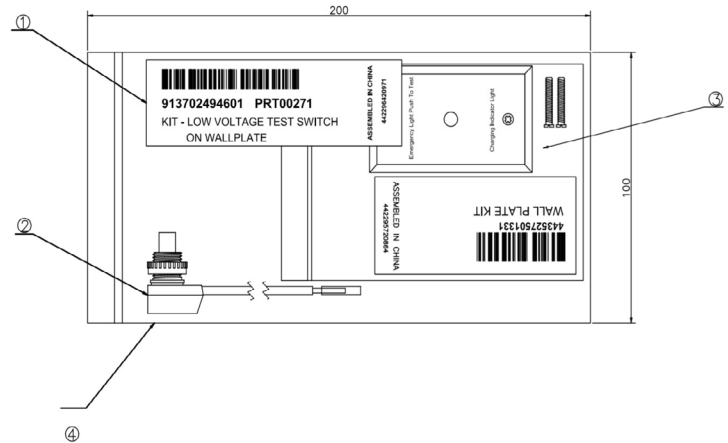




## PRT00271 – Low Voltage Test Switch with Wall-Plate



**Model #:** PRT00271

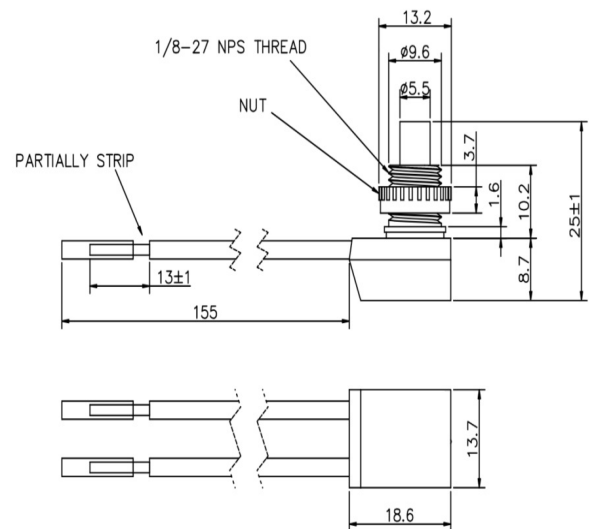
**12NC:** 913702494601

Optional low voltage test switch with single gang box wall-plate

### Specifications:

- Kit includes two pieces – low voltage normally open test switch with single-gang wall-plate with one 0.375" hole for installing the test switch (wall-plate mounting screws also included)
- Test switch specifications
  - Function: Pushbutton, normally off
  - Certifications: UL, c-UL
  - Electrical Ratings: 3A, 277VAC; 6A, 125VAC
  - Rated Life: 12,000 cycles
  - Flammability Rating: UL94 V-2
- Test switch installs easily in wall-plate (barrel fits in wall-plate 0.375" hole)
- Wall-plate installs onto any standard single-gang electrical box
- Test switch wires to GTD10DIM white/red and white/blue leads or BLCD16DIM Terminals 3 and 4. See product installation instructions for more details.

### Test Switch Drawing:



(Dimensions in mm)

The information presented in this document is not intended as any commercial offer and does not form part of any quotation or contract. This product is designed for use with other Bodine branded products.